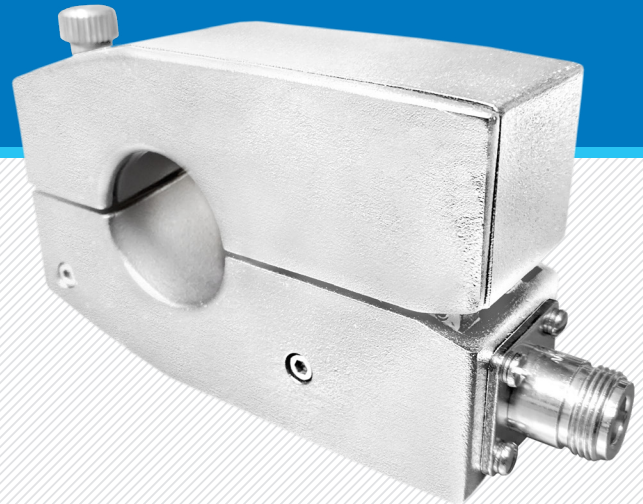


MODEL NUMBER:
RFCP20M

**EMI/RF CURRENT
MONITORING PROBE, 20 HZ - 20 MHZ**



FEATURES:

- ✓ **FREQ RANGE = 20 HZ - 20 MHZ**
- ✓ **MAX RF CURRENT = 40 AMPS**
- ✓ **TRANSFER IMPEDANCE = $1.5\Omega \pm 3$ DB**
- ✓ **APERTURES: 1.25" (32.00MM)**
- ✓ **CONNECTOR TYPES = N TYPE OR BNC**

Conducted currents can be measured without making direct contact with the source conductor or metallic surface by means of clamp-on current probes.

The RFCP20M Current Probe is designed to permit field intensity meters, spectrum analyzers, and other 50 ohm impedance instruments to measure quantitative magnitudes of current. Measurements can be made on single and multiconductor cables, ground and bonding straps, shielded conduits and on coaxial cables.

For ease and convenience of performing conducted measurements, all of our current probes utilize the split type clamp-on design. Small and lightweight, each Current Probe is manufactured to industry standards, thus insuring repeatable performance.

PHYSICAL DIMENSIONS

Aperture	1.25" (32.0 mm)
CW	150
Weight:	1.4 lb.'s (0.65 Kg)

RECOMMENDED ACCESSORIES

- RCFC500M Calibration Probe Fixture
- RFC Low Loss RF Cables

PROBE CALIBRATION

6/20/2019 5:43:48 PM
1311.6010K42-103153-Gp

S-Parameters S21 dB Insertion Loss

Trc1 — S21 dB Mag 10 dB/ Ref -40 dB Cal

1

