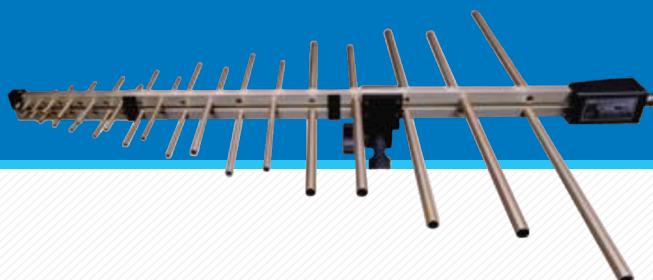


MODEL NUMBER:
LPA7G

LOG PERIODIC ANTENNA
290 MHz - 7 GHz



This extended range of this log periodic antenna is a cost-effective solution for higher frequency testing.

PARAMETER	SPECIFICATION
Frequency Range	290 MHz - 7000 MHz
Antenna Factor	15 - 47 dB
Gain	5.8 dBi
Maximum Continuous Power	1000 Watts
Maximum Radiated Field	200 V/m
Pattern Type	directional
3dB Beamwidth (E-Field)	35°
3dB Beamwidth (H-Field)	100°
Impedance	50 Ω
VSWR	1.65:1 typ. (2.5:1 max)
Connector	N-Type, Female
Mounting Base	¼ x 20 Thread, Female

FEATURES

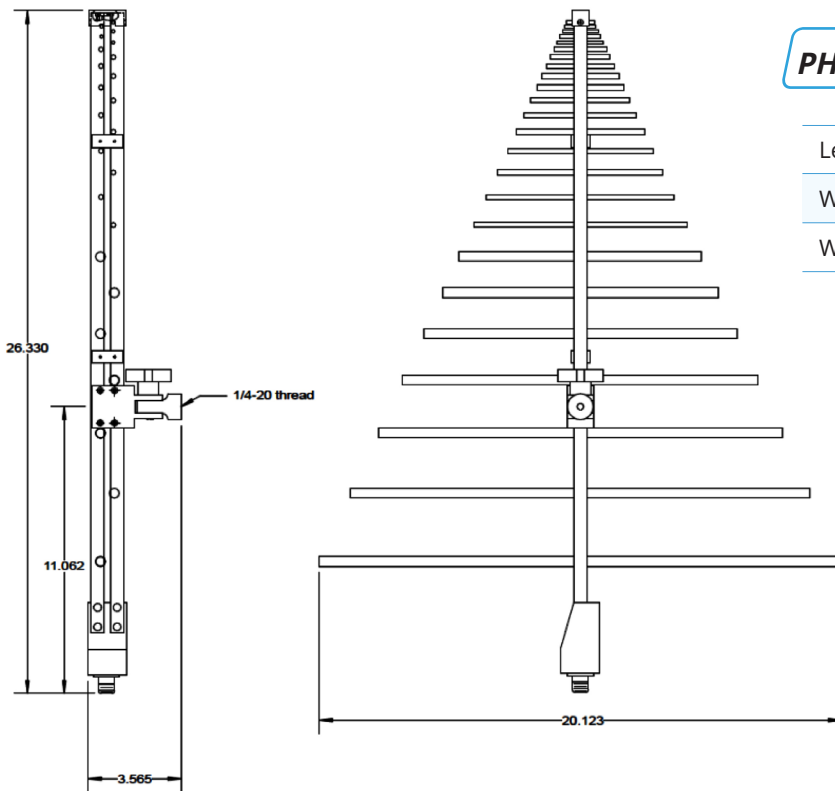
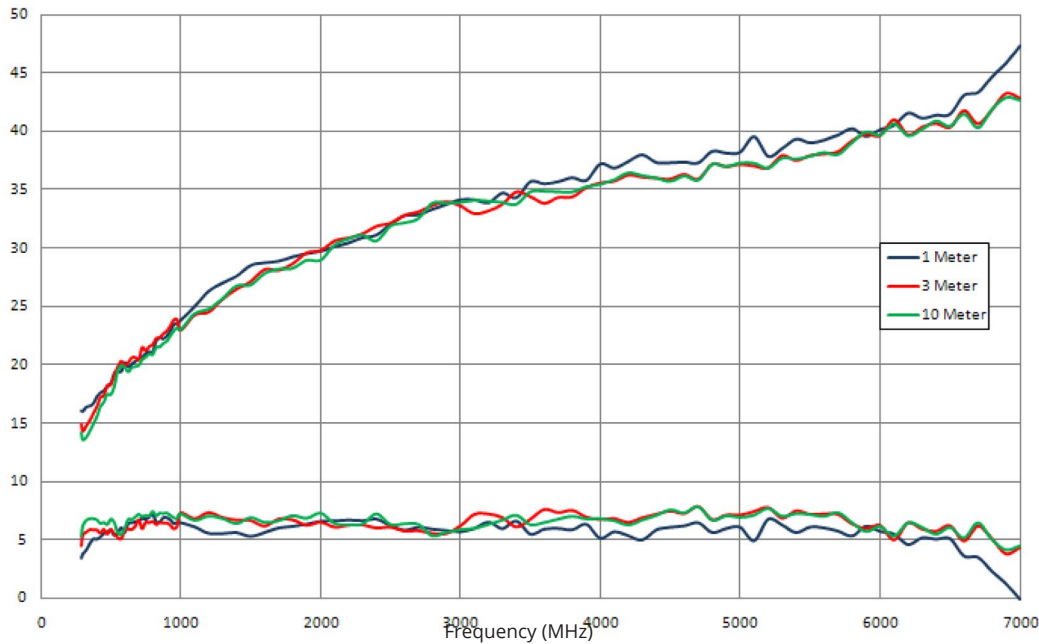
- Frequency Range of 290 MHz to 7000 MHz
- Receive and Transmit
- Individually Calibrated (1, 3 and 10 Meter calibration included, horizontal polarization)
- Rugged Construction
- Three Year Warranty

The EMCShop' LPA7G antenna is lightweight, compact and has been manufactured to ensure maximum gain, low VSWR and high-power handling capabilities. Whether testing inside a shielded enclosure or outdoors, this antenna will display efficient performance characteristics through its frequency range.

RECOMMENDED ACCESSORIES

- ATU-510 (Antenna Tripod, Wooden)
- AEH-510 (Azimuth and Elevation Head)
- PAM-0207 (25 dB Preamplifier)

ANTENNA DATA LOG PERIODIC ANTENNA



PHYSICAL DIMENSIONS

Length: 26.3 in. (66.8 cm)

Width: 20.1 in. (51.1 cm)

Weight: 1.4 lb.'s (0.64 kg)

Information presented in this datasheet was current at the time of publication. The EMCShop continual product improvement makes it necessary to reserve the right to change our electrical and mechanical specifications without notice.



WWW.THEEMCSHOP.COM



SALES@THEEMCSHOP.COM



844.423.7435



THE EMC SHOP, 7401 GALILEE RD. #160 ROSEVILLE, CA 95678