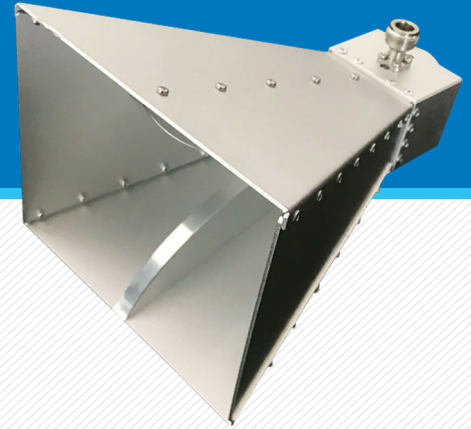


MODEL NUMBER:  
**DRHA6G**

**DUAL RIDGED HORN  
 ANTENNA 1 GHZ - 6 GHZ**



The EMC Shop DRHA6G is a linearly polarized broadband horn antenna which is ideal for many applications particularly EMC/RF measurements. It can be used for both receiving and transmitting. A precision 'N' connector is used to provide low VSWR and high power handling capability.

**FEATURES:**

Style	Dual Ridge Horn Antenna
Frequency Range	1 GHz - 6.0 GHz
Power	50 Watts (CW)
VSWR	2.0 : 1
Polarization	Linear
Impedance	50 Ohm
Connector	N Type Female
Weight	0.5 kg (1.1 lbs)
Size	18.5 x 14.2 x 11.2cm

