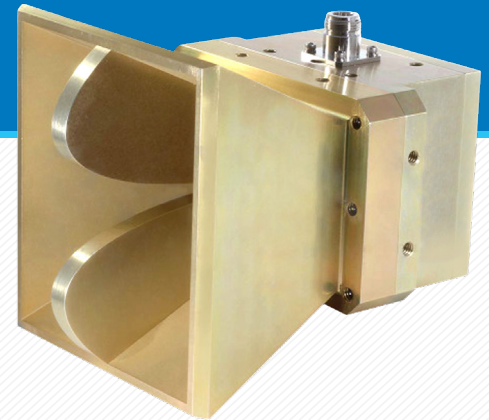


MODEL NUMBER:
DRHA6G

Dual Ridged Horn Antenna



DESCRIPTION:

The DRHA6G is a dual ridged horn antenna that operates from 3 to 6 GHz with 200 Watts of continuous power. This lightweight antenna is a great option for broadband field monitoring, antenna gain measurements and many other system setups.

FEATURES

- Dual Ridged
- Broadband
- Moderate Gain
- Flexible mounting Capability

ELECTRICAL SPECIFICATIONS

Frequency Range:	3 GHz - 6 GHz
Gain:	10 dBi
Maximum Continuous Power:	200 Watts
E-Plane 3 dB Beamwidth:	50°
H-Plane 3 dB Beamwidth:	50°
Sidelobe Levels E-plane:	-10 dB
Sidelobe Levels H-plane:	-15 dB
Impedance:	50 Ω
Connector Type:	N Type Connector
Mounting Base:	¼-20 threaded holes

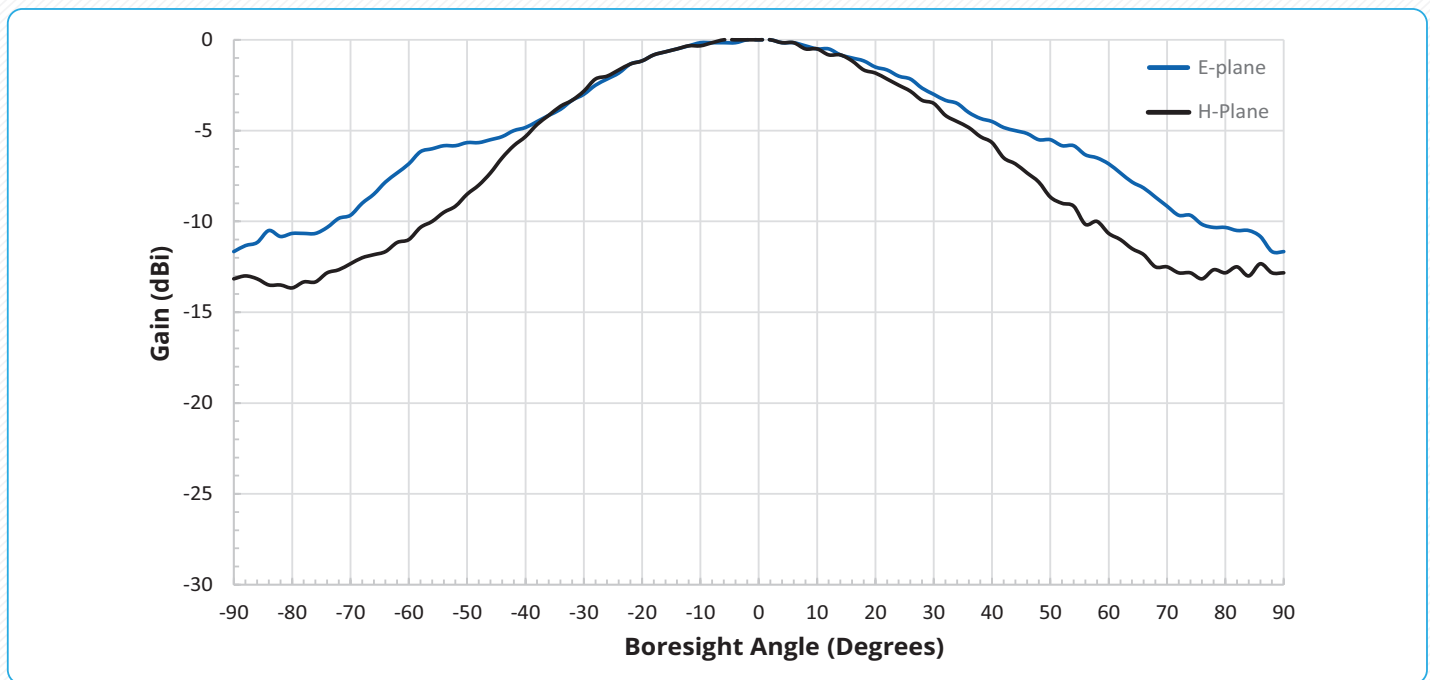
RECOMMENDED ACCESSORIES

- PA18G (Pre-amplifier)
- RFC-NN-3M (3 meter N/N Cable)
- WT1.5M (Antenna Tripod Unit, Wooden)
- AAM-10 (Antenna Azimuth Head)

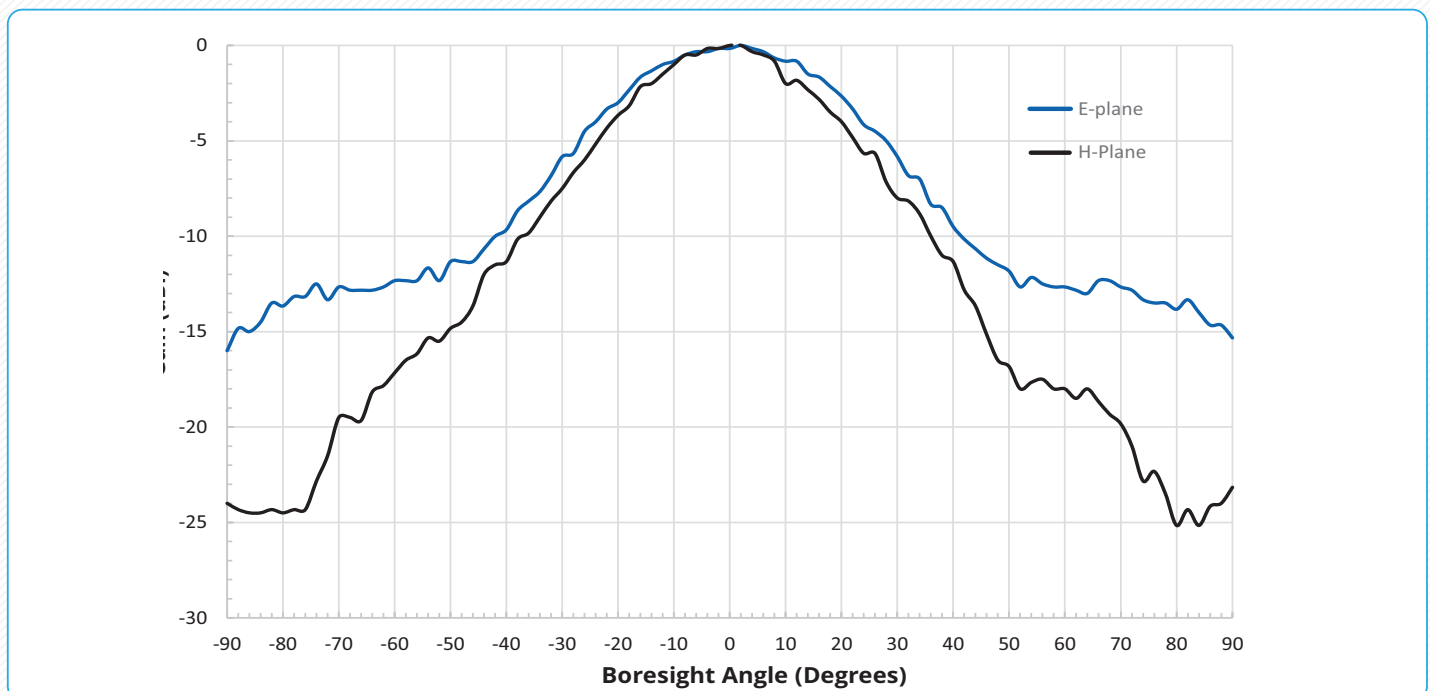
PHYSICAL DIMENSIONS

Width:	5.51 in.
Height:	5 in.
Length:	8 in.
Weight:	6 lb

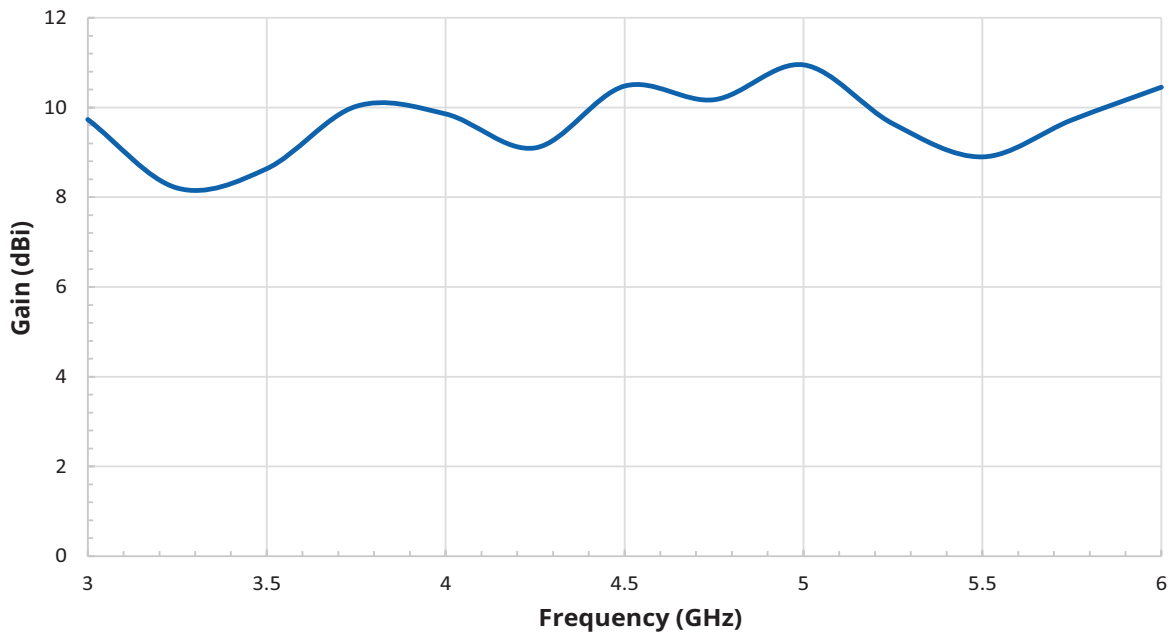
TYPICAL ANTENNA PATTERNS @ 3 GHZ



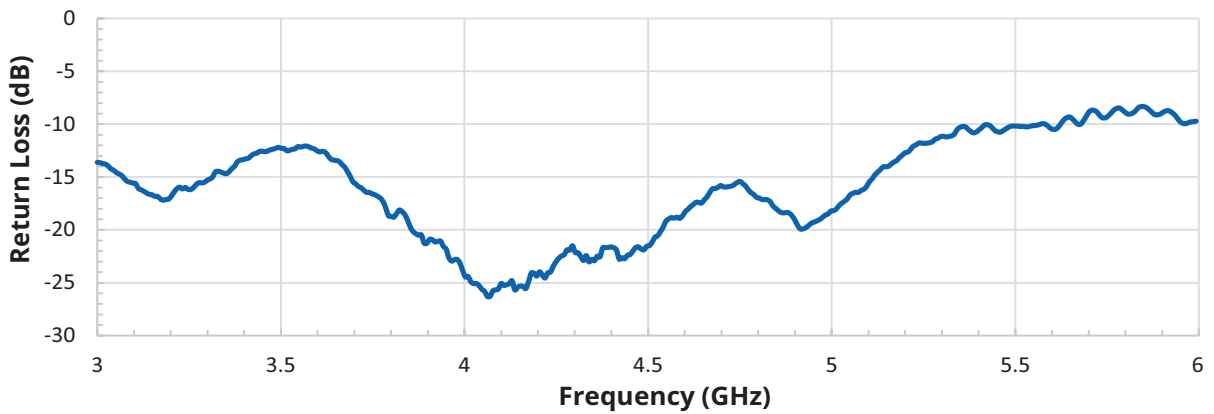
TYPICAL ANTENNA PATTERNS @ 6 GHZ



TYPICAL GAIN VS FREQUENCY



TYPICAL RETURN LOSS VS FREQUENCY



WWW.THEEMCSHOP.COM



SALES@THEEMCSHOP.COM



844.423.7435



THE EMC SHOP, 7401 GALILEE RD. #160 ROSEVILLE, CA 95678