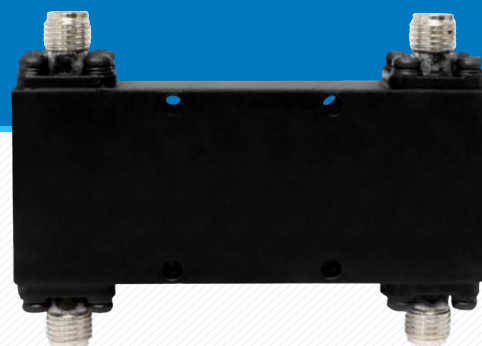


MODEL NUMBER:  
**DC8G-50**

## Coaxial Hybrid Directional Coupler



### DESCRIPTION:

The DC8G-50 is a coaxial hybrid directional coupler, 2 to 8 GHz with 3 dB coupling. It is used for isolating, eliminating or combining signals in microwave signal routing and radio frequency. With SMA female connectors and 50 watts maximum power, it makes a great coupler for every test lab and sub-assemblies.

### FEATURES

- 2-8 GHz Frequency
- Small Size
- Low Insertion Loss
- Flat Coupling

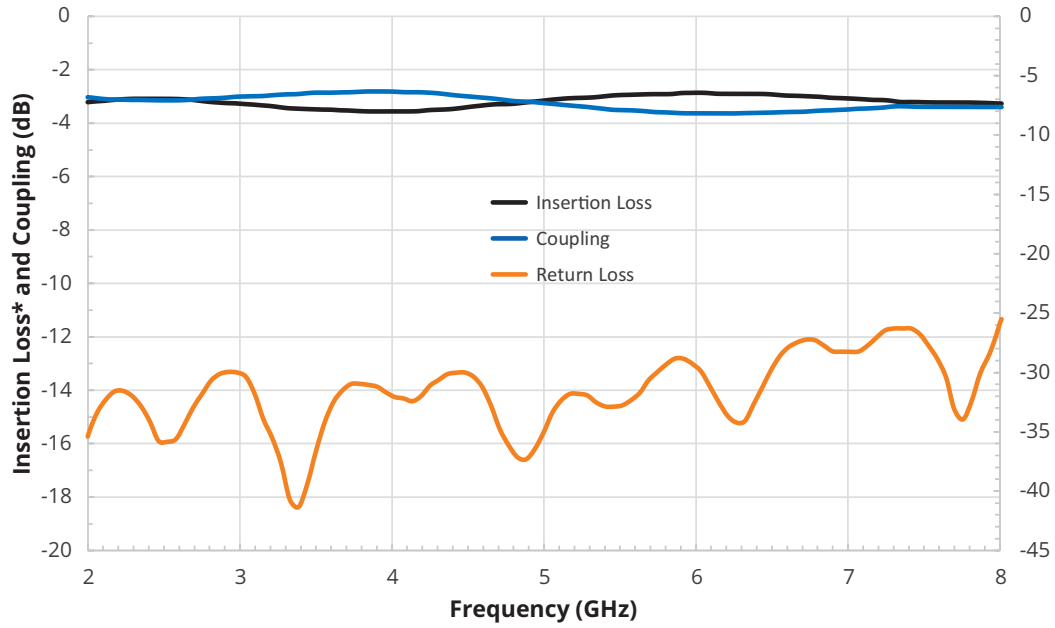
### ELECTRICAL SPECIFICATIONS

Frequency:	2-80 GHz
Power:	50 W CW
Coupling:	3 dB
Insertion Loss:	8 dB
Impedance:	50 $\Omega$
Phase Unbalance:	$\pm 5$
Amplitude Unbalance:	$\pm 0.7$ dB

### MECHANICAL SPECIFICATIONS:

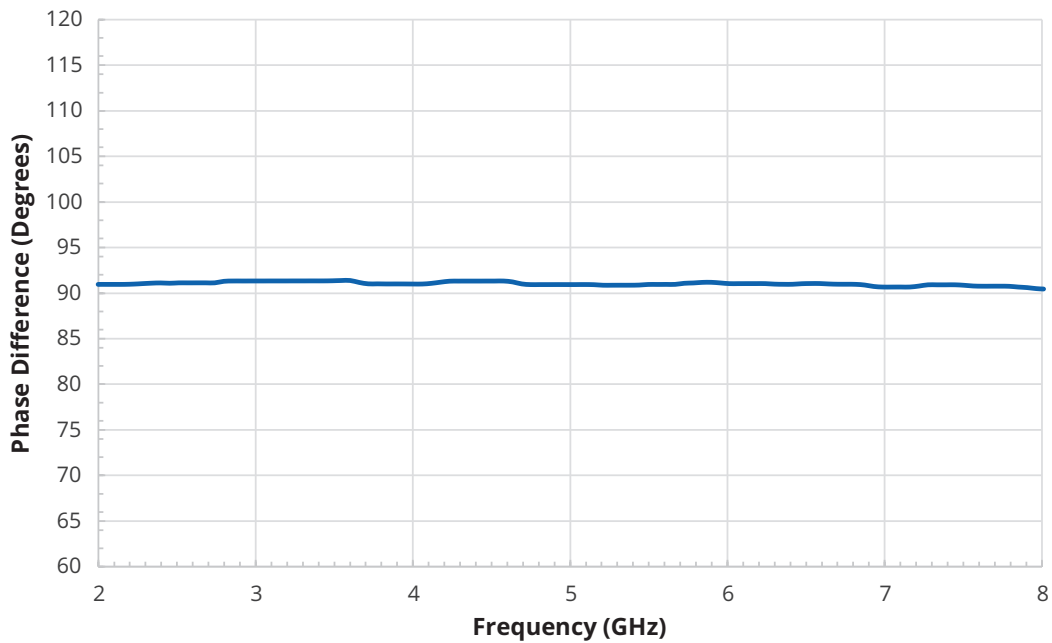
RF Ports:	SMA Female
Material:	Aluminum
Surface Finish:	Black Epoxy Painted
Operating Temperature:	-45°C to +85°C
Specification Temperature:	+25 °C
Size (LxWxH):	2.36 X .98 X .43 inches

## TYPICAL PERFORMANCE VS. FREQUENCY



\*Insertion loss includes circuit loss.

## TYPICAL PHASE DIFFERENCE VS. FREQUENCY



WWW.THEEMCSHOP.COM



SALES@THEEMCSHOP.COM



844.423.7435



THE EMC SHOP, 7401 GALILEE RD. #160 ROSEVILLE, CA 95678