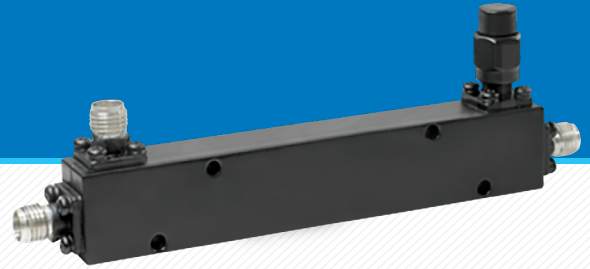


MODEL NUMBER:  
**DC40G-10**

**Coaxial  
Directional Coupler**



### DESCRIPTION:

The DC40G-10 is a coaxial directional coupler, 1 to 40 GHz with 10 dB coupling. It is used for isolating, eliminating or combining signals in microwave signal routing and radio frequency. With K (F) connectors and 50 watts maximum power, it makes a great coupler for every test lab.

### FEATURES

- 1-40 GHz Frequency
- Small Size
- Light Weight
- Flat Coupling

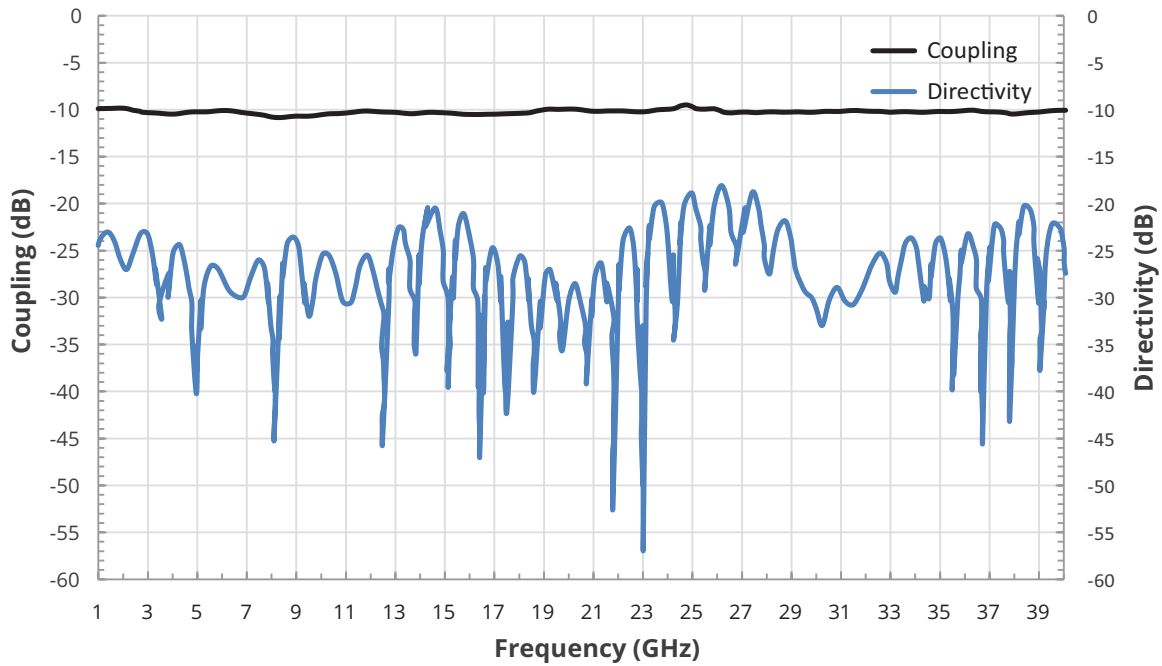
### ELECTRICAL SPECIFICATIONS

|                 |            |
|-----------------|------------|
| Frequency:      | 1-40 GHz   |
| Power:          | 50 W CW    |
| Coupling:       | 10 dB      |
| Insertion Loss: | 2.1 dB     |
| Flatness:       | ± 1.0 dB   |
| Directivity:    | 10 dB Min. |

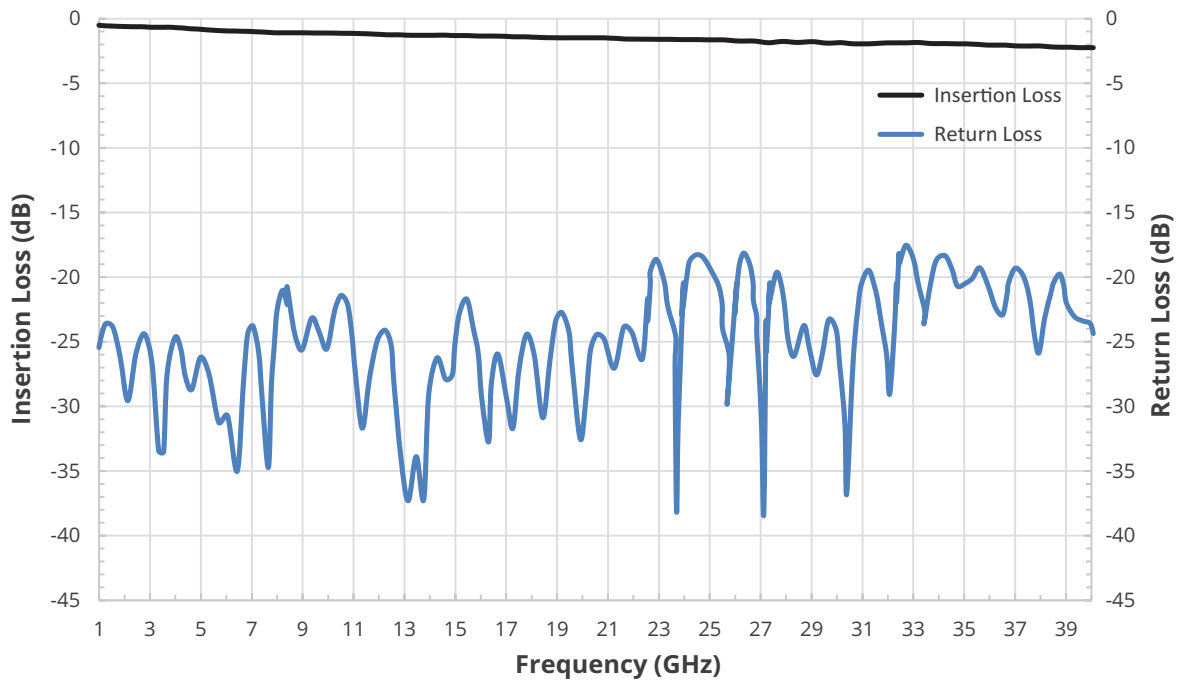
### MECHANICAL SPECIFICATIONS:

|                        |                         |
|------------------------|-------------------------|
| RF Ports:              | K (F)                   |
| Material:              | Aluminum                |
| Surface Finish:        | Black Painted           |
| Operating Temperature: | -40°C to +80°C          |
| Storage Temperature:   | -40°C to +80°C          |
| Size (LxWxH):          | 3.31 X .59 X .43 inches |

## TYPICAL COUPLING AND DIRECTIVITY VS. FREQUENCY



## TYPICAL PERFORMANCE VS. FREQUENCY



WWW.THEEMCSHOP.COM



SALES@THEEMCSHOP.COM



844.423.7435



THE EMC SHOP, 7401 GALILEE RD. #160 ROSEVILLE, CA 95678