

100 Watts RF Power For:

- Driving Ultrasonic Transducers
- Testing
- Laboratory Applications



Featuring:

- 10 KHz – 12 MHz
- Power Measurement
 - Forward & Reflected
- Instantaneous Bandwidth
- Solid State Reliability
- Forced Air Cooling

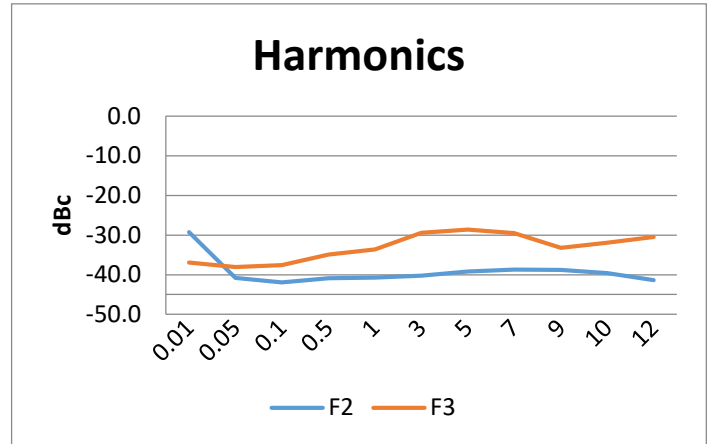
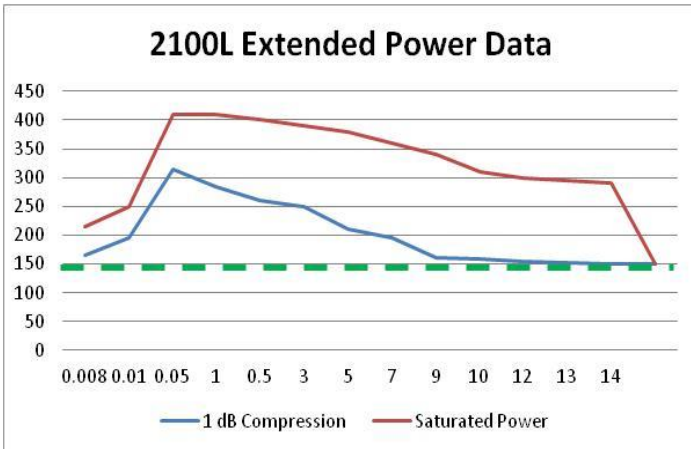
2100L POWER AMPLIFIER

E&I 2100L Specifications

Class of Operation:	Class A
Frequency Coverage:	10 KHz – 12 MHz
Rated Power:	100 Watts P1dB Compression
Saturated Power:	150 Watts
Power Gain:	50 dB nominal
Gain Flatness:	+/- 1.5 dB
Input Power for Rated Pout:	0 dBm (1 mW)
Input Impedance / VSWR:	50 Ω / 1.5:1 maximum
Output Impedance / VSWR:	50 Ω / 2:1 maximum
Harmonic Level:	< -25 dBc @ 100W Pout
Ruggedness:	∞ :1 VSWR
Stability:	Unconditional into any passive or reactive load
Protection:	Unit will withstand input signal of +13 dBm without damage (1.0 V rms) max.
Third Order Intercept:	IP3 ~ 59 dBm
AC Input:	100 – 240 VAC 47 – 63 Hz
Temperature Range:	0° – 40° C
Cooling:	Forced Air
Dimensions (H x W x D):	5.3 x 16.5 x 18.4 inches 134.5 x 420 x 467 mm
Weight:	32.5 lbs (14.7 Kg)
Connectors:	BNC
Rack Mounting:	Optional
RF Input Signal:	AM, FM, SSB, Pulsed



2100L POWER AMPLIFIER



Protection:

- Software Overdrive Limit: 150 Watts
- Software Reverse Power Limit: 110 Watts

Performance into 50 ohms

Input				Amplifier Gain Nominal dB	Output			
Input Power Watts	dBm	V p-p Volts	V rms Volts		Output Power dBm	Watts	V p-p Volts	V rms Volts
0.000250	-6.02	0.32	0.11	50	43.98	25.00	100.00	35.36
0.0006	-2.50	0.30	0.17	50	47.50	56.25	150.00	53.03
0.0010	0.00	0.63	0.22	50	50.00	100.00	200.00	70.71
0.0015	1.76	0.77	0.27	50	51.76	150.06	245.00	86.62



Electronics & Innovation, Ltd.
 150 Research Blvd.
 Rochester, NY 14623
 Tel: 585-214-0598 / Fax: 585-214-0580
 www.eandiltd.com