

Coupling/decoupling network for unshielded asymmetric remote communication line

CDN 405AF2Y



As per

- > IEC 61000-4-5
- > EN 61000-4-5
- > GB/T 17626.5

Description

CDN 405AF2Y is designed for 1-pair 2-line unshielded asymmetric remote communication line. Peak voltage is up to 6kV. Powerful decoupling capacity makes auxiliary equipment free of surge to make sure test repeatability. Max. residual voltage on AE port is only 90V when the surge voltage is 2kV without extra decoupling elements.

Features

- > Used for remote communication signal test of power system
- > Used for 1-pair (2-line) unshielded asymmetric line

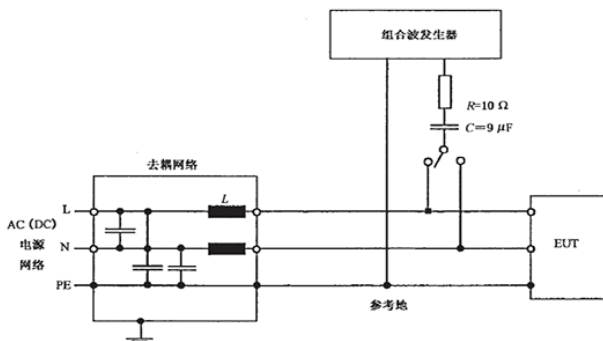
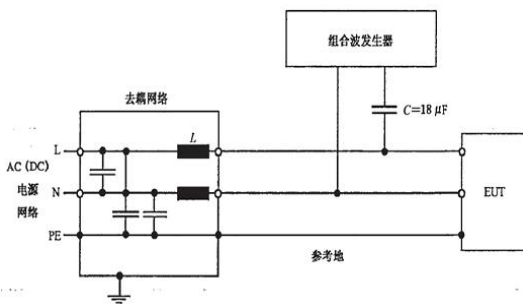
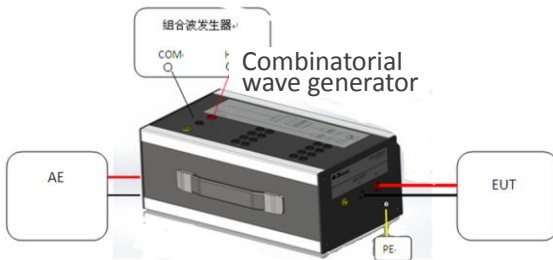
Industries

- > Communication
- > Telecom
- > Medical
- > Broadcast
- > Railway
- > Technology
- > Military
- > Avionics
- > New energy

Technical parameters	
Model	CDN 405AF2Y
Standard	IEC/EN 61000-4-5
Output voltage waveform	1. 2/50us
Output current waveform	8/20us
Max. current	16A
EUT port	4mm Banana
AE port	4mm Banana
Max. Test voltage	6KV
Coupling component	GDT 90 (90V Gas Discharge Tube) internal
Working voltage	DC : 3-12V
Residual voltage	<15% (Coupling surge voltage)

General data	
Weight	3.6Kg
Dimension	250x200x133cm(long x wide x high)
Enclosure material	Alloy
Temperature	15°C-35°C operating environment
Humidity	45%-75%
Package case	carton
Accessories	
HV cable	1
Short connection cable	1
Ground cable	1

Test connection schematic:





SUZHOU 3CTEST ELECTRONIC CO., LTD

Headquarter

Unit 2, Anda Industrial park, Jinshan Rd, SND, Suzhou,
 215011, China
 Tel: +86-512-68413700/3800/3900
 Fax: +86-512-68079795
 http://www.3ctest.cn
 Email: info@3ctest.cn

BEIJING OFFICE

Room D 206, D block, Keshi Building, No.28, Shangdixinxin
 Road, Haidian District, Beijing, China
 Tel: +86-010-82899984/82899948
 Fax: +86-010-82899943

CHENGDU OFFICE

Room 1501, Unit 3, Ideal Centre, No.38 Tianyi Street, SND,
 6100085, Chengdu, China
 Tel: +86-028-85327800
 Fax: +86-028-85311400

SHENZHEN OFFICE

Room 805, Huawei Building, Xili Chaguang Road, Nanshan
 District, Shenzhen, China.
 Tel: +86-755-86626625/86344313
 Fax: +86-755-26966255

Xi'an Office

Add.: Room 2204, Visa Yinghai Building, Green land Central
 Plaza, Jinye Road, Crossig of Zhangbasan Road, High-tech
 district, Xi'an city, China.
 Tel: +86-029-68985077/68985700
 Fax: +86-029-68717677



TAIWAN OFFICE

RICHTEC INSTRUMENTS CO., LTD
 6F-5, No.130, Ln.235, Baoqiao Rd, Xindian District, New
 Taipei City, 23145, Taiwan
 Tel: +886-2-89121185 Fax: +886-2-89121812
 Email: rich.tec@msa.hinet.net
 http://www.richtec.com.tw



TESTEK Co.,LTD

Address: 601Ho, SungwoonKoa, 141 Hyeonam-ro,
 Suji-Gu, Yongin-Si, Gyeonggi-Do, 448-808
 Tel: 070-4099-2072/H.P : 010-6500-6648
 Email: woo@testek.co.kr
 http://www.testek.co.kr, www.3ctest.co.kr



Quantel Pte Ltd

Address: 46 Lorong 17 Geylang #05-02
 Enterprise Industrial Building
 Singapore 388568
 Tel: +65 6745 3200
 Email: info@quantel-global.com
 https://www.quantel-global.com



European Agency

Europe: AR Europe
 Yvonne McGlinchey
 ymcglinchey@ARWorld.US
 +353 61 504300
 Address: First Floor Ashling Building, National Technology
 Park, Limerick, Ireland