

Voltage Ripple Disturbance Simulator (Pulse A) LFS 300A



As per

> ISO/DTS 7637-4: Pulse A

Summary

LFS 300A Voltage Ripple Disturbance Simulator is as per ISO/DTS 7637-4: A-2017 to meet transient conduction measurement Pulse A for new energy vehicle-mounted electric drive and HV components. This equipment is based on our third generation control platform with intelligent control, easy operation and one-key performing tests after setting parameters.

Features

- > 5.7inch colorful touch screen operation
- > For ISO/DTS 7637-4:A
- > Integrative design to be simple and convenient, safe and durable
- > Key components with high-quality materials, high reliability, fine appearance and comfortable operation
- > Ethernet, RJ45 interface for PC remote control and test report printing

Application

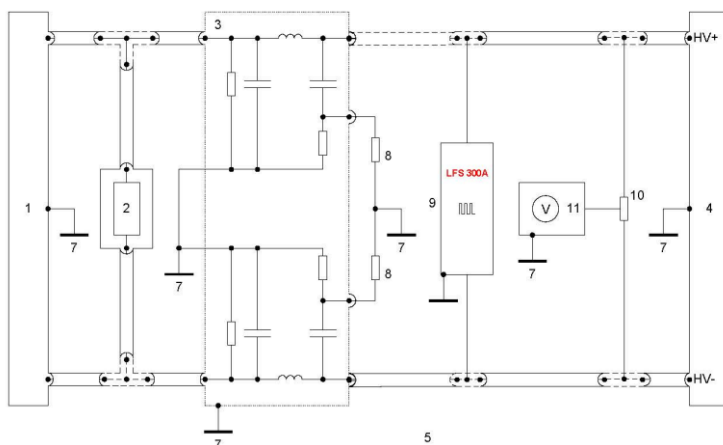
- > New Energy

Technical parameters	
Frequency range	1 KHz~300KHz/duty cycle 50%
Frequency step	1KHz/10KHz
Open-circuit output voltage Upp	0.5~50V adjustable
Ripple wave dwell time	1~5s adjustable
Generator output impedance	$Z_{out} \leq 0,5 \Omega$ ($Z_{out} = U_{pp}/I_{pp}$)
T_{Rise}, T_{Fall}	$< 1 \mu s$ @ Open-circuit voltage (25 Vpp)
T_{Rise}, T_{Fall}	$< 2,5 \mu s$ @ Short-circuit current(≥ 50 App);
Current capacity	≥ 32 A (rms), ≥ 70 A (peak)
Coupling	Differential mode: 120 μF (single-ended or double-ended optional) Common mode: 30uF + 10ohm resistance
Serial interface	LAN Ethernet RJ45
Test mode	HV+line-to-HV-line; HV+ line-to-ground; HV- line to ground; HV-&HV- line to ground

General parameters	
Power supply	AC 110/220V, $\pm 10\%$, 45-65Hz
Environment temperature	15 - 35°C
Size	600*450*370 (L*W*H 8U) 625*450*195 (L*W*H 4U)
Weight	Around 70Kg

Standard equipped	
2 pcs equipments, user manual, inspection report, test wires and fuse	

Test connection diagram:





SUZHOU 3CTEST ELECTRONIC CO., LTD

Headquarter

Unit 2, Anda Industrial park, Jinshan Rd, SND, Suzhou,
215011, China
Tel: +86-512-68413700/3800/3900
Fax: +86-512-68079795
http://www.3ctest.cn
Email: info@3ctest.cn

BEIJING OFFICE

Room D 206, D block, Keshi Building, No.28, Shangdixinx
Road, Haidian District, Beijing, China
Tel: +86-010-82899984/82899948
Fax: +86-010-82899943

CHENGDU OFFICE

Room 1501, Unit 3, Ideal Centre, No.38 Tianyi Street, SND,
610085, Chengdu, China
Tel: +86-028-85327800
Fax: +86-028-85311400

SHENZHEN OFFICE

Room 805, Huawei Building, Xili Chaguang Road, Nanshan
District, Shenzhen, China.
Tel: +86-755-86626625/86344313
Fax: +86-755-26966255

Xi'an Office

Add.: Room 2204, Visa Yinghai Building, Green land Central
Plaza, Jinye Road, Crossig of Zhangbasan Road, High-tech
district, Xi'an city, China.
Tel: +86-029-68985077/68985700
Fax: +86-029-68717677



TAIWAN OFFICE

RICHTEC INSTRUMENTS CO., LTD
6F-5, No.130, Ln.235, Baoqiao Rd, Xindian District, New
Taipei City, 23145, Taiwan
Tel: +886-2-89121185 Fax: +886-2-89121812
Email: rich.tec@msa.hinet.net
http://www.richtec.com.tw



TESTEK Co.,LTD

Address: 601Ho, SungwoonKoa, 141 Hyeonam-ro,
Suji-Gu, Yongin-Si, Gyeonggi-Do, 448-808
Tel: 070-4099-2072/H.P : 010-6500-6648
Email: woo@testek.co.kr
http://www.testek.co.kr, www.3ctest.co.kr



Quantel Pte Ltd

Address: 46 Lorong 17 Geylang #05-02
Enterprise Industrial Building
Singapore 388568
Tel: +65 6745 3200
Email: info@quantel-global.com
https://www.quantel-global.com



The EMC Shop
Address: 7401 Galilee Rd. #160 Roseville, CA 95678
Tel.: 844.423.7435
Email: sales@theemcshop.com
https://www.theemcshop.com



Russia Agency:
"CDIP", llc.
Add.: 121471, Moscow, Ryabinovaya street, house 69,
building 5, room. 7
Mr. Sventickiy Andrey
Tel.: +79856003171 / +7(495) 956-20-22
Email: info@cdip.ru / andrey.sventickiy@cdip.ru
www.cdip.ru