

100% METAL FREE

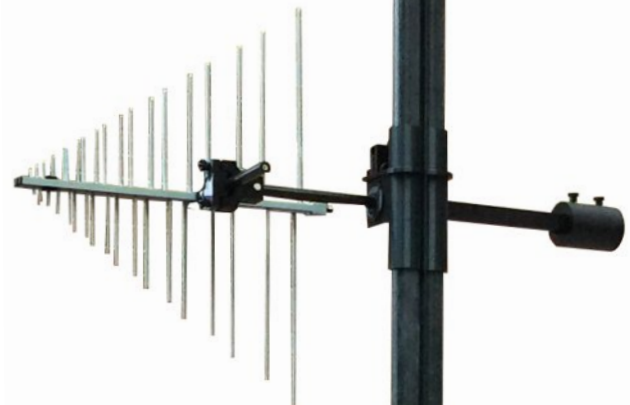
### NMR-03

NON-MAGNETIC AND NON-REFLECTIVE ANTENNA TOWER

The "non-magnetic and non-reflective" antenna tower NMR-03 allows to place antennas and sensors in every environment with no problem of interference, reflection or magnetic attraction. The tower is built with non-metallic material, in order to be usable in anechoic chambers.

The NMR-03 is solid, extendable up to 4 m high, and easy to mount.

All these features make it a greatly innovative tower for EMI-EMC, RF, EMF and MRI measurement.

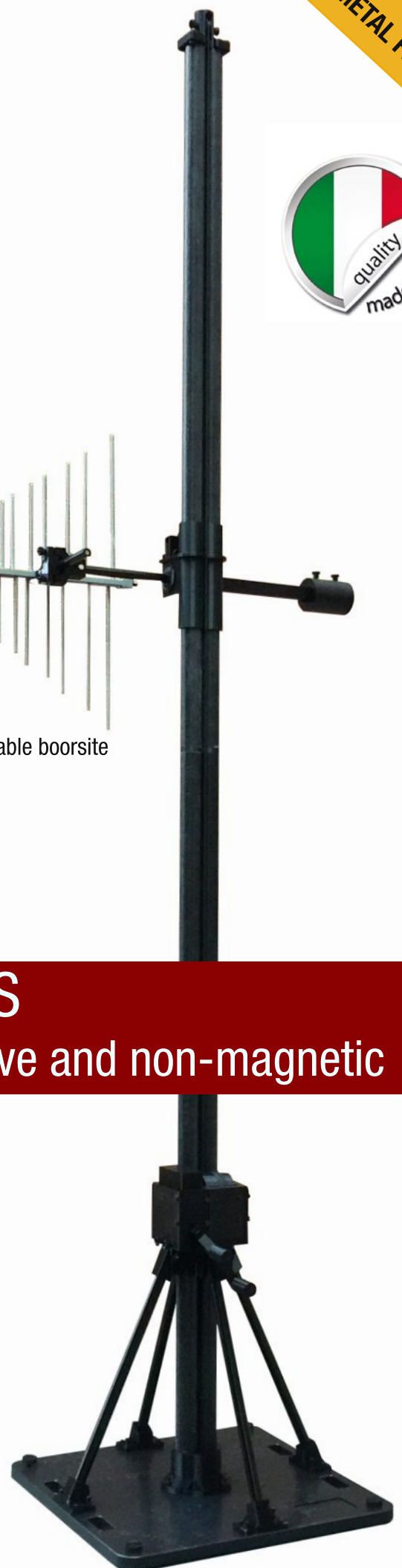
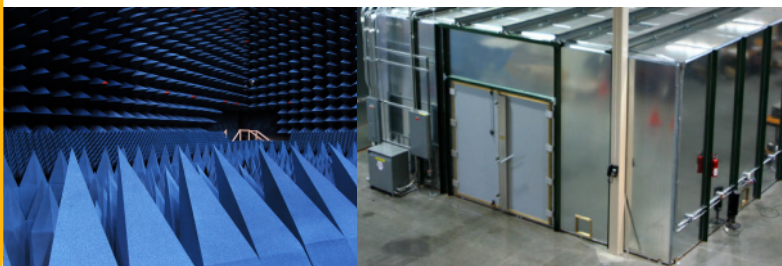


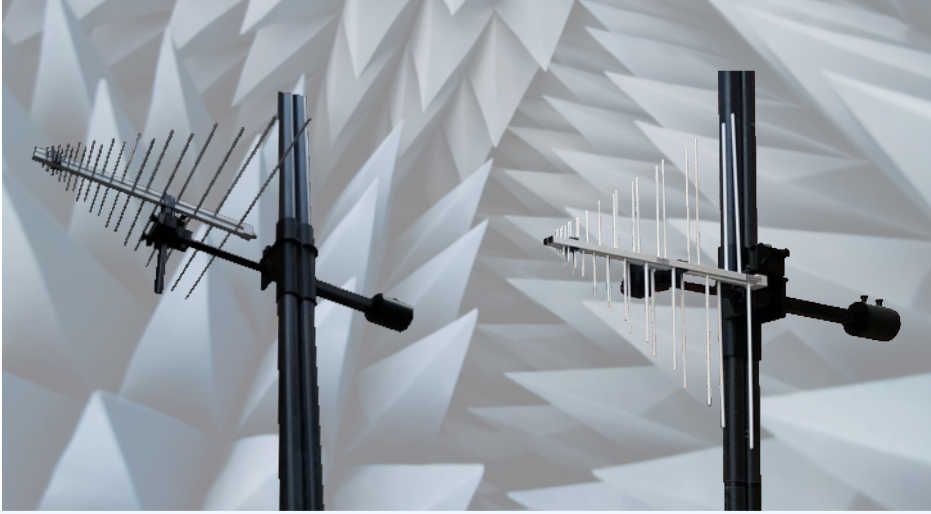
Adjustable boorsite

## FIBERGLASS

very light but strong, non-reflective and non-magnetic

anechoic, semi anechoic chambers and shielded room





NMR-03 is used to place antennas (log periodic, biconical, loop, horn, rod, etc) and sensors (isotropic, triaxial) up to 4m, in environments where metal is not allowed.

## MAIN APPLICATIONS

- EMI - EMC measurement in anechoic chamber
- RF interference analysis in situ
- EMF measurement
- Shielding effectiveness measurement in MRI

## TECHNICAL SPECIFICATIONS

### NMR-03 TOWER

Max adjustable height	4 m
Min adjustable height	0,8 m
Max payload	10 Kg max depending on the conditions, ask for antenna positioning details
Lift	winch with safety autoblock system. lift with millimeter accuracy
Tower positionin base	leveling with adjustable feet
Polarisation	manual
Operating temperature	from -10°C to 50°C
Dimensions	0,8 x 0,8 x 4 m
Weight	20 Kg
Materials	FIBERGLASS tube NYLON and PEEK bolts and nuts DELTRIN outreach for antenna support PLA components non-metallic paint

Subjec to change without notice



Gradual and effortless lifting winch safety self-locking system to prevent the load from falling

## AVAILABLE OPTIONS

Telemeter (for height control)  
Stepper motor programmable by USB for automatic elevation

Mod. NMR-03-T  
Mod. NMR-03-SM