

emcware®

EMC Software Suite
Version 4.0

Features

The emcware® Suite by AR RF/Microwave Instrumentation provides automated Electromagnetic Compatibility (EMC) testing and report generation for all types of users from corporate to professional test laboratories. It is a standalone software application designed to operate on a PC running a Microsoft Windows™ operating system. The export classification for this software is EAR99. This software is controlled for export in accordance with the U.S. Export Administration Regulations. Diversion contrary to U.S. law is prohibited.

Software Design

The emcware® Suite is designed to be user-friendly yet extremely flexible. It is broken up into modules based on different types of EMC testing. Within each module there are pre-defined standards. The ability to create custom test standards is also provided.

Equipment Management

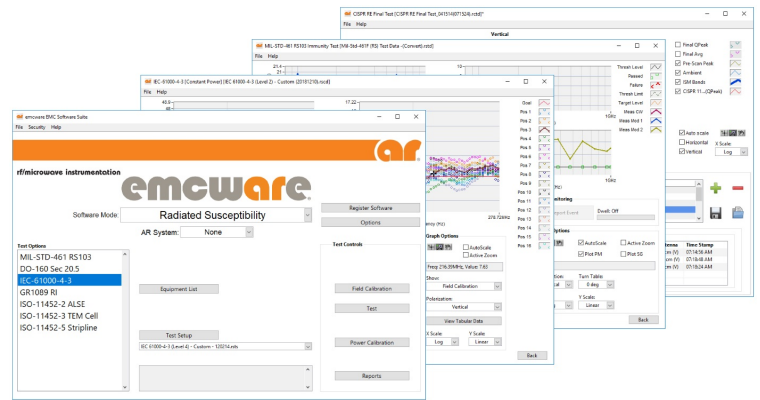
Contained within the emcware® is a built-in Equipment List Manager. This tool allows for equipment to be entered one time and then accessed from within any of the modules. The Equipment List Manager also keeps track of calibration dates and can warn the user when the calibration date of a specific piece of equipment is approaching.

EUT Monitoring

Use custom equipment or a National Instruments DAQ card to monitor and report the status of the equipment under test (EUT). The National Instruments DAQ device can monitor Analog or Digital levels from the EUT or reset the EUT using the Digital Outputs. Custom equipment, in conjunction with dynamic link library (DLL) files, allows for complete EUT monitoring and control.

Instrument Drivers

Instrument control is provided through AR RF/Microwave Instrumentation's extensive driver library. Creation of new drivers for equipment that is not currently supported is available up-



on request. Drivers can also be created and imported by the user in the form of dynamic link libraries (DDL) files. For a list of supported remote interfaces, see the **Equipment Interface** section.

Signal Routing

The emcware® is designed to allow the user to select between manual and automatic signal routing. Automatic signal routing is implemented using one or more AR RF/Microwave Instrumentation Model SC2000 System Controllers.

Reports

Extensive report generation capability is built into each module. These reports can be customized by the user. All reports are created in Microsoft Word or Microsoft Excel.

Help Instructions

A detailed help utility is included with the emcware®. The contents of the help instructions can be searched by keyword or topic. Open the help file using the context-sensitive help buttons located throughout the user interface.

Software Licensing

The emcware® is fully functional for a period of 60 days from the date of install. Registration is required to obtain a license for operation beyond 60 days.

AR Systems Compatibility

The emcware® can automatically control select AR Systems using built-in equipment setups. See the Compatible Systems for a complete list.

AR RF/Microwave
Instrumentation
160 School House Rd
Souderton, PA 18964
215-723-8181

For an applications engineer call: 800.933.8181

www.arworld.us



emcware®

EMC Software Suite
Version 4.0

INCLUDED TEST STANDARDS, emcware®						
Organization	Standard	Version	RS	CI	RE	CE
CISPR	CISPR 11	Ed 5			✓	✓
	CISPR 13	Ed 4			✓	
	CISPR 22	Ed 6			✓	✓
	CISPR 25	Ed 2			✓	✓
	CISPR 32	Ed 1			✓	✓
Department of Defense	MIL-STD-461 RS103	D, E, F, G	✓			
	MIL-STD-461 CS114	D, E, F, G		✓		
	MIL-STD-461 RE(101, 102)	D, E, F, G			✓	
	MIL-STD-461 CE (101, 102)	D, E, F, G				✓
RTCA	DO-160 Section 20	D, E, F, G	✓	✓		
	DO-160 Section 21	D, E, F			✓	✓
IEC	61000-4-3	Ed 3.1	✓			
	61000-4-6	Ed 4		✓		
	50130-4	1996	✓	✓		
	60601-1-2	Ed 4	✓	✓		
	61000-6-1	Ed 2	✓	✓		
	61326	Ed 2	✓	✓		
	61000-6-2	Ed 2		✓		
Telcordia Technologies	GR-1089-Core	Issue 3, 6	✓			
International Organization for Standards	ISO-11452-(2, 3, 5)	Ed 2	✓			
	ISO-11452-4	Ed 4		✓		
Ford	ES-XW7T-1A278-AC	10/10/2003	✓	✓		
GM	GMW3097	04/2004	✓	✓		
BMW	GS 95002	2004-10		✓		
Chrysler	DC-11224	2006-10		✓		
Renault	36-00-808	2003		✓		
Peugeot	B21 7110	B		✓		

LEGEND: RS (Radiated Susceptibility), CI (Conducted Immunity), RE (Radiated Emissions, CE (Conducted Emissions)

RECOMMENDED PC HARDWARE REQUIREMENTS:

- Intel i5 or equivalent
- 4 GB of RAM
- Screen resolution 1,024 x 768 pixels and higher
- 2 available USB (2.0) Ports

OPERATING ENVIRONMENTS:

- Windows 10, Windows 7 Service Pack 1, Windows 8.1

SUPPORTED INTERFACE HARDWARE (Not Included):

- National Instruments GPIB Controller
 - NI GPIB-USB-HS+ [AR P/N 10013688] or equivalent National Instruments device required for GPIB communications
- National Instruments DAQ (Data Acquisition) device
 - NI USB-6212 [AR P/N 10025318] is recommended, but the configuration is customizable

SUPPORTED EQUIPMENT COMMUNICATIONS INTERFACES:

- IEEE 488 (GPIB), National Instruments NI GPIB-USB-HS+ [AR P/N 10013688] or equivalent device required
- RS-232
- USB
- Ethernet (creation of a National Instruments VISA TCP/IP Resource required)

EQUIPMENT DRIVERS:

- A full list of included equipment drivers can be found at the end of this document.
- For equipment that is not currently supported, please contact the factory.
- Equipment drivers can be written by the user in a multitude of programming languages (LabVIEW, Visual Studios, etc.) and imported as dynamic link library (DLL) files.
 - Equipment Driver Templates are included for LabVIEW and Visual C++
- Includes demonstration drivers for all controllable equipment types to allow operation without equipment.

REPORTS:

- Microsoft Word/Excel 2007 or newer required for all output formats
- Output Formats
 - Microsoft Word / Excel
 - PDF
- Included Data
 - All data collected in numerical & graphical formats
 - Test information (test standard, file paths, completion date, etc.)
 - User and Customer information (optional)
 - EUT monitoring data including Pass / Fail status and user comments
 - Test setup information (test level, frequencies, dwell times and EUT monitoring setup)
 - Equipment names and calibration dates
 - Basic equipment interconnect diagram

SPECIAL FEATURES:

- Test up to 2 Modulations in addition to CW per frequency during one test
- Pause, stop, and resume tests without data loss
- User defined amplitude and frequency thresholding capability (Supports MIL STD 461 thresholding method)
- Pre-defined test standards
- Simple creation of custom test standards
- Graphical display of test levels
- Graphical display of RF path for easy test configurations and changes
- Automated harmonics check (IEC 61000-4-3)
- Automatic control of AR Systems (see **Compatible Systems**)
- Automatic software updates (requires Internet access)

COMPATIBLE SYSTEMS:

- CI00250A
- CI00400A
- CI00401A
- CI00402

LICENSES:

- 60-day trial license [AR P/N **10027087**]
- Permanent license [AR P/N **10028192**]

SUPPORT:

- Permanent license [AR P/N **10028192**]
- Service Contract that provides phone and e-mail support (8AM-5PM EST) for a period of one year [AR P/N **10027093**]

INCLUDED EQUIPMENT DRIVERS

Amplifiers

AR RF/MICRO INSTR.....All Models Supported*

Field Probes/Monitors

AR RF/MICRO INSTR.....All Models Supported*
 CHAUVIN ARNOUX.....CA43
 HOLADAY INDUSTRIES.....HI-6105, HI-6100
 NARDA.....EMC-20, NBM-520,
 EMR-200, EP60x Series

Receivers

AR RF/MICRO INSTR.....All Models Supported*
 AGILENT/HP.....MXE N9038A
 ROHDE & SCHWARZ.....ESU, ESCI, ESPI, ESIB

System Controllers

AR RF/MICRO INSTR.....All Models Supported*

Spectrum Analyzers

AGILENT/HP.....ESA Series, PSA Series,
 N90x0A (CXA, EXA,
 MXA, PXA), E740Xa,
 856x Series, 859x Se-
 ries, 8542E, 8546A
 RIGOL.....DSA8xx
 ROHDE & SCHWARZ.....FSL, FSP

Antenna Controllers

SUNAR.....(formerly Sunol Scienc-
 es) SC98VA, SC110VA
 EMCO.....1050, 1090A, 2090A
 ETS.....EMCenter (7006-001)
 (AUX)

Turntable Controllers

SUNAR.....(formerly Sunol Scienc-
 es) SC98VT, SC110VT
 EMCO.....1060, 1090T, 2090T
 FRANKONIA.....FC06
 ETS.....EMCenter(7006-001)

Probe Positioners

PROBOTIC SYSTEMS.....801
 TDK.....SI 300

Pulse Generators

AGILENT/HP.....3325A, 33220A,
 8116A, 81101A

Signal Generators

AR RF/MICRO INSTR.....All Models Supported*
 AGILENT/HP.....DSO-X 3xxx Series,
 E8257C, E8257D, ESG,
 N517XB, N5183A,
 N9310A, 33120A,
 33250A, 3336C, 8341,
 8350B, 83620B,
 83630B, 83731
 8642B, 8642B, 8648,
 8657A, 8657B, 8662A,
 8663A, 8664A, 8673B
 ANRITSU.....MG3694A
 BERKLEY NUCLEONICS.....845/835-6
 FLUKE.....6060A, 6061A, 6062A
 GIGATRONICS.....1018, 6080A, 12000A
 HAMEG.....HM8134-3, HM8135
 IFR.....341x Series
 MARCONI.....2022, 2023, 2024,
 2025, 2030, 2031,
 2032
 ROHDE & SCHWARZ.....SMB,, SMBV100A, SME,
 SMF, SMG, SMH, SML,
 SMP, SMR, SMT, SMX,
 SMY
 WILTRON.....6668B, 6747A
 ANAPICO.....APSINx000, 12G, 20G,
 26G
 RIGOL.....DSA8xx

Power Meters

AR RF/MICRO INSTR.....All Models Supported*
 AGILENT/HP.....DSO-X 3xxx Series, EPM
 E44117, EPM E44118,
 EPM E44119, EPM
 441x, EPM 441A, EPM
 E442, N1913A,
 N1914A 436A, 437B,
 438A
 BIRD.....4421
 BOONTON.....4230, 9200, BI 55xx
 DARE.....RPR1004A, RPR1006A,
 RPR1018A
 MARCONI.....6960
 ROHDE & SCHWARZ.....NRP, NRVS, NRVD,
 URV5
 TESEQ.....PM6003

***NOTE:** AR models created after the current release of the software may not be fully supported, but will be supported in subsequent releases within the scope of the emcware® software.