

40 dB Dual Directional Coupler Model DC6G-100

The EMC Shop specializes in RF, Signal Integrity and Compliance testing, supplying dual directional couplers with RF power meters, RF power amplifiers and other RF test equipment.

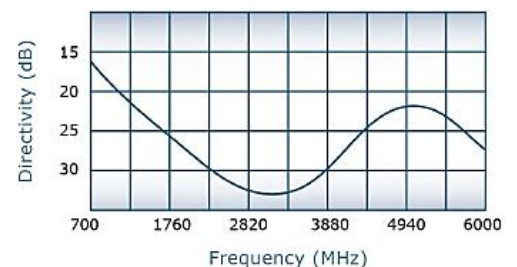
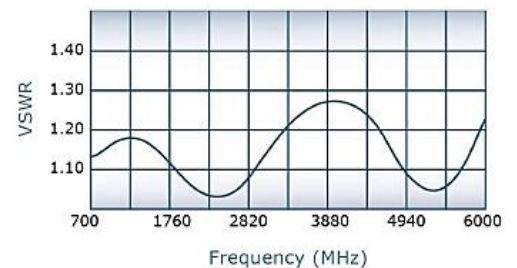
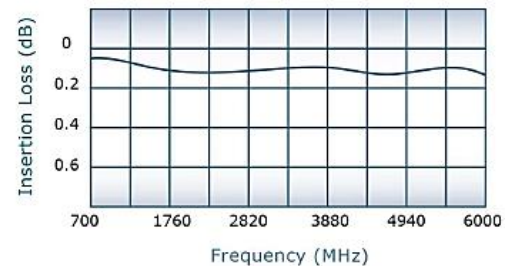
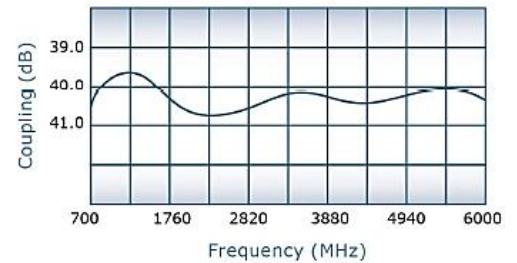
Specifications:

Frequency:	700 MHz to 6 GHz
Coupling:	40 dB \pm 1 dB
Maximum Input Power:	100 Watt
Flatness:	\pm 1 dB Max.
VSWR:	1.30:1 Max.
Directivity:	15 dB Min. (20 dB Typical)

- Standard N-Type Connection (SMA and others upon request)
- Package with an RF Power Amplifier
- Suitable for IEC 61000-4-3, IEC 60601-1-2

Notes

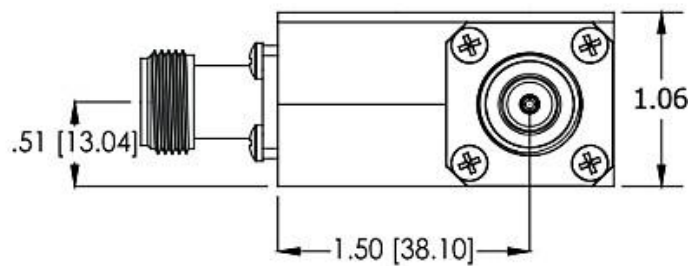
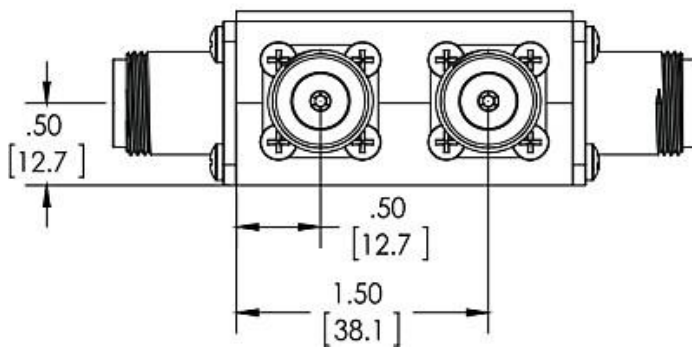
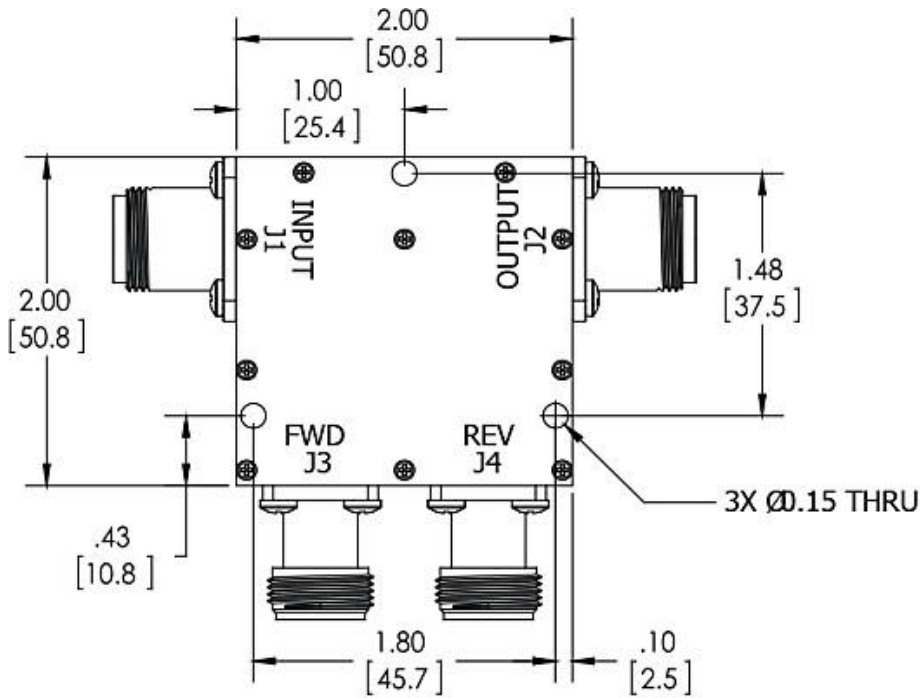
- Does not included theoretical coupling loses
- All specifications guaranteed
- Test data provided with each unit shipped
- Operating Temperature: -55°C to +75°C
- Uni-Directional version available



Specifications subject to change without notice

7401 Galilee Rd. #160
Roseville, California 95678 U.S.A.

Toll Free: 844.423.7435
sales@theemcshop.com



DC6G-100-DAT-V1.0-7-2018

7401 Galilee Rd. #160
Roseville, California 95678 U.S.A.

Toll Free: 844.423.7435
sales@theemcshop.com